

Industrial Ethernet Switch - FL SWITCH 4000T-4POE-SFP



1026924

<https://www.phoenixcontact.com/us/products/1026924>

Please be informed that the data shown in this PDF document is generated from our Online Catalog. Please find the complete data in the user documentation. Our General Terms of Use for Downloads are valid.



Managed PoE+ Ethernet switch conforms to IEEE 802.3af/at. Includes four 10/100 PoE+ ports with 60 W capability, one 100/1000 Mbps SFP port, and a total PoE system budget of 180 W.

Product Description

FL SWITCH 4000 managed industrial PoE Ethernet switches combine Gigabit interfaces with extensive network performance for the most demanding applications. Extensive user and device access control security features with complete IEEE redundancy and 15 ms recovery time extended ring redundancy optimize network uptime. POE control is optimized with POE diagnostics, watchdog, and scheduling, functions. A comprehensive mix of 10/100 Mbps and Gigabit fiber optic connections combine performance with installed cost savings.

Your advantages

- Four 10/100 Mbps RJ45 ports for device connections and one SFP-based fiber optic LC interfaces for network trunk lines.
- -40 °C to 75 °C ambient temperature
- Redundant power supply
- Wide -40° ... +75°C temperature range
- VLANs
- DHCP client
- MSTP
- RSTP
- Web-based management, SNMP
- Secure web-based and SNMP-based management
- Extensive web diagnostics with configurable LED and remote alarm contacts
- Unique cleanup function hides unused configuration pages, reducing complexity, maintenance and startup times

Commercial Data

Item number	1026924
Packing unit	1 pc
Sales Key	C23
Product Key	DNN125
Catalog Page	Page 319 (C-6-2019)
GTIN	4055626519968
Weight per Piece (including packing)	1,949.4 g
Weight per Piece (excluding packing)	1,949.4 g
Customs tariff number	85176200
Country of origin	TW

Industrial Ethernet Switch - FL SWITCH 4000T-4POE-SFP



1026924

<https://www.phoenixcontact.com/us/products/1026924>

Technical Data

Dimensions

Width	75 mm
Height	170 mm
Depth	152 mm

Notes

Notes on operation	Designed to function with all 48 V DC QUINT and TRIO power supplies.
Notes on operation	Mode A or Mode B PoE

Utilization restriction

EMC note	EMC: class A product, see manufacturer's declaration in the download area
----------	---

Material specifications

Housing material	Aluminum
------------------	----------

Mounting

Mounting type	DIN rail mounting
---------------	-------------------

Interfaces

SFP module

Number of interfaces	1
Connection method	SFP port
Transmission speed	100/1000 Mbps (full duplex)
Transmission physics	Depending on the SFP module
Transmission length	up to 80 km (Depending on the fiber/SFP module used)
Signal LEDs	Data receive, link status
No. of channels	1 (SFP ports)

Ethernet (PoE)

Connection method	RJ45
Note on the connection method	Auto negotiation and autocrossing
Transmission speed	10/100 Mbps
Transmission physics	Ethernet in RJ45 twisted pair
Transmission length	100 m
No. of channels	4 (RJ45 ports)

Product properties

Type	Block design
Product type	Switch
MTTF	21.3 Years (MIL-HDBK-217F standard, temperature 25°C, operating cycle 100%)

Industrial Ethernet Switch - FL SWITCH 4000T-4POE-SFP



1026924

<https://www.phoenixcontact.com/us/products/1026924>

Switch functions

Diagnostic functions	RMON History
	LLDP (Link Layer Discovery Protocol)
	SNMP-Traps
	N:1-Portmirroring
Basic functions	Store and forward switch, Extended Ring and IEEE redundancy, Multicast control, IGMP snooping, trunking, Port and Tagging VLANs, Port and IEEE 802.1x security, SNMP V3 and Https security, SNTP, web customization, user accounts, Modbus/TCP, PoE according to IEEE 802.3at/af/bt.
Filter functions	Quality of Service (8 and 64 priority classes)
	Port prioritization
	VLAN (up to 64 VLANs)
	IGMP Snooping (256 groups)
	IGMP Query
IP parameterization	DHCP-Client
	BootP
Management	Web-based management (HTTP/HTTPS)
	SNMPv1/v2/v3
Redundancy	ERR (Extended ring redundancy (15 ms))
	RSTP (Rapid Spanning Tree Protocol)
	MSTP (Multiple Spanning Tree Protocol)
Status and diagnostic indicators	LEDs: U _{S1} , U _{S2} (redundant voltage supply), Alarm (alarm contact), Link/Activity and PoE per Ethernet port
Additional functions	Transmission of MMS and GOOSE (IEC 61850-8-1)
Time synchronization	SNTP (Simple Network Time Protocol)

Security functions

Basic functions	Store and forward switch, Extended Ring and IEEE redundancy, Multicast control, IGMP snooping, trunking, Port and Tagging VLANs, Port and IEEE 802.1x security, SNMP V3 and Https security, SNTP, web customization, user accounts, Modbus/TCP, PoE according to IEEE 802.3at/af/bt.
-----------------	--

Electrical properties

Local diagnostics	US1, US2 Supply voltage Green LED
	LNK/ACT Link status/data transmission Green LED
	PoE PoE detection Orange LED
	Alarm Power failure at US1 or US2/Link failure
Transmission medium	Copper
	FO

Supply

Supply voltage (DC)	55 V DC (redundant)
Supply voltage range	50 V DC ... 57 V DC (> 52 V DC for PoE+ or 60 W output recommended)
Inrush current	43.6 A (52 V DC for 1830 µs)

Industrial Ethernet Switch - FL SWITCH 4000T-4POE-SFP



1026924

<https://www.phoenixcontact.com/us/products/1026924>

Residual ripple	3.6 V _{PP} (within the permitted voltage range)
Max. current consumption	3.9 A (Maximum, nominal load)
Typical current consumption	142 mA (U _S = 55 V DC)

Connection data

Connection technology

Connection name	Power supply
-----------------	--------------

Power supply

Connection method	Pluggable COMBICON screw connections
Conductor cross section, rigid	0.2 mm ² ... 2.5 mm ²
Conductor cross section, flexible	0.2 mm ² ... 2.5 mm ²
Conductor cross section AWG	24 ... 12
Stripping length	7 mm

Ambient conditions

Degree of protection	IP30
Ambient temperature (operation)	-40 °C ... 75 °C
Ambient temperature (storage/transport)	-40 °C ... 85 °C
Permissible humidity (operation)	5 % ... 95 % (non-condensing)
Permissible humidity (storage/transport)	5 % ... 95 % (non-condensing)
Air pressure (operation)	57 kPa ... 108 kPa (up to 4850 m above mean sea level)
Air pressure (storage/transport)	57 kPa ... 108 kPa (up to 4850 m above mean sea level)

Standards and regulations

Standards/specifications	EN 50121 for railway applications
--------------------------	-----------------------------------

Approval data

Conformity/Approvals

Conformance	CE-compliant
-------------	--------------

EMC data

Conformance with EMC directives	IEC 61000-6-2 IEC 61000-4-2 (ESD) Criterion B
	IEC 61000-4-3 (immunity to radiated interference) Criterion A
	IEC 61000-4-4 (burst) Criterion A
	IEC 61000-4-5 (surge) Criterion B
	IEC 61000-4-6 (immunity to conducted interference) Criterion A
	IEC 61000-4-8 (immunity to magnetic fields) Criterion A
	EN 55022 (emitted interference) Criterion A
Electromagnetic compatibility	Conformance with EMC Directive 2004/108/EC
Noise emission	EN 61000-6-4
Noise immunity	EN 61000-6-2:2005

LED signaling

Industrial Ethernet Switch - FL SWITCH 4000T-4POE-SFP



1026924

<https://www.phoenixcontact.com/us/products/1026924>

Status display

LEDs: U_{S1} , U_{S2} (redundant voltage supply), Alarm (alarm contact), Link/Activity and PoE per Ethernet port

Industrial Ethernet Switch - FL SWITCH 4000T-4POE-SFP



1026924

<https://www.phoenixcontact.com/us/products/1026924>

Approvals



EAC

Approval ID: RU*-DE.*.B.00741/19



UL Listed

Approval ID: FILE E 238705



cUL Listed

Approval ID: FILE E 238705

cULus Listed

Industrial Ethernet Switch - FL SWITCH 4000T-4POE-SFP



1026924

<https://www.phoenixcontact.com/us/products/1026924>

Classifications

ECLASS

ECLASS-9.0	19170106
ECLASS-10.0.1	19170401
ECLASS-11.0	19170401

ETIM

ETIM 8.0	EC000734
----------	----------

UNSPSC

UNSPSC 21.0	43222600
-------------	----------

Industrial Ethernet Switch - FL SWITCH 4000T-4POE-SFP



1026924

<https://www.phoenixcontact.com/us/products/1026924>

Environmental Product Compliance

REACH SVHC	Lead 7439-92-1
China RoHS	Environmentally Friendly Use Period = 10;
	For information on hazardous substances, refer to the manufacturer's declaration available under "Downloads"

Industrial Ethernet Switch - FL SWITCH 4000T-4POE-SFP



1026924

<https://www.phoenixcontact.com/us/products/1026924>

Accessories

PCB connector

PCB connector - MSTB 2,5/ 5-ST - 1754504

<https://www.phoenixcontact.com/us/products/1754504>



PCB connector, nominal cross section: 2.5 mm², color: green, nominal current: 12 A, rated voltage (III/2): 320 V, contact surface: Tin, type of contact: Female connector, number of potentials: 5, number of rows: 1, number of positions: 5, number of connections: 5, product range: MSTB 2,5/...-ST, pitch: 5 mm, connection method: Screw connection with tension sleeve, screw head form: L Slotted, conductor/PCB connection direction: 0 °, locking clip: - Locking clip, plug-in system: COMBICON MSTB 2,5, locking: without, mounting: without, type of packaging: packed in cardboard

Power supply unit

Power supply unit - QUINT4-PS/1AC/48DC/5 - 2904610

<https://www.phoenixcontact.com/us/products/2904610>



Primary-switched QUINT POWER power supply for DIN rail mounting with free choice of output characteristic curve and SFB (Selective Fuse Breaking) technology, input: 1-phase, output: 48 V DC / 5 A

Industrial Ethernet Switch - FL SWITCH 4000T-4POE-SFP



1026924

<https://www.phoenixcontact.com/us/products/1026924>

Power supply unit

Power supply unit - QUINT4-PS/1AC/48DC/10 - 2904611

<https://www.phoenixcontact.com/us/products/2904611>



Primary-switched QUINT POWER power supply for DIN rail mounting with free choice of output characteristic curve and SFB (Selective Fuse Breaking) technology, input: 1-phase, output: 48 V DC / 10 A

Power supply unit

Power supply unit - TRIO-PS-2G/1AC/48DC/5 - 2903159

<https://www.phoenixcontact.com/us/products/2903159>



Primary-switched TRIO power supply for DIN rail mounting, input: 1-phase, output: 48 V DC / 5 A, dynamic boost, tool-free fast connection technology for solid and stranded conductors with ferrule

Industrial Ethernet Switch - FL SWITCH 4000T-4POE-SFP



1026924

<https://www.phoenixcontact.com/us/products/1026924>

Power supply unit

Power supply unit - TRIO-PS-2G/1AC/48DC/10 - 2903160

<https://www.phoenixcontact.com/us/products/2903160>



Primary-switched TRIO POWER power supply with push-in connection for DIN rail mounting, input: single phase, output: 48 V DC/10 A

Ethernet module

Ethernet module - FL PD 1001 T GT - 2891042

<https://www.phoenixcontact.com/us/products/2891042>



Factoryline Power over Ethernet splitter (PD) for separating power and data according to IEEE 802.3af and at, no configuration required, can be used with 10, 100, 1000 Mbps networks, 24 V DC output voltage

Industrial Ethernet Switch - FL SWITCH 4000T-4POE-SFP



1026924

<https://www.phoenixcontact.com/us/products/1026924>

Surge protection device

Surge protection device - DT-LAN-CAT.6+ - 2881007

<https://www.phoenixcontact.com/us/products/2881007>



Surge protection in accordance with Class E_A (CAT6_A), for Gigabit Ethernet (up to 10 Gbps), token ring, FDDI/CDDI, ISDN, and DS1. Suitable for Power over Ethernet (PoE++ / 4PPoE) "Mode A" and "Mode B". RJ45 attachment plug with separate grounding cable and ground connection snap-on foot for NS 35 DIN rails.

Port Guard Security Element

Port Guard Security Element - FL SEC PAC 4TX - 2832865

<https://www.phoenixcontact.com/us/products/2832865>



Layer1 security elements for four RJ45 network connections for use with patch boxes and panels

Industrial Ethernet Switch - FL SWITCH 4000T-4POE-SFP



1026924

<https://www.phoenixcontact.com/us/products/1026924>

DIN rail adapter

DIN rail adapter - FL DIN RA - 2891053

<https://www.phoenixcontact.com/us/products/2891053>

The FL DIN RA is installed in a standard, 19-inch rack (EIA-310-D, IEC 60297-3-100) to allow DIN rail mounted equipment to be rack mounted.

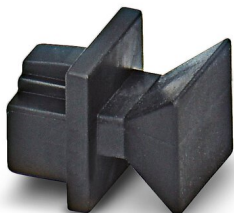


Dust protection

Dust protection - FL RJ45 PROTECT CAP - 2832991

<https://www.phoenixcontact.com/us/products/2832991>

Dust protection caps for RJ45 socket



Industrial Ethernet Switch - FL SWITCH 4000T-4POE-SFP



1026924

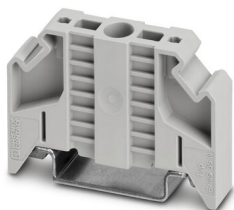
<https://www.phoenixcontact.com/us/products/1026924>

End clamp

End clamp - E/NS 35 N - 0800886

<https://www.phoenixcontact.com/us/products/0800886>

End clamp, width: 9.5 mm, color: gray



Media module

Media module - FL SFP FX - 2891081

<https://www.phoenixcontact.com/us/products/2891081>

The small form-factor plug-in module provides a fiber optic interface with a data transmission speed of 100 Mbps with a wavelength of 1310 nm (long).



Industrial Ethernet Switch - FL SWITCH 4000T-4POE-SFP



1026924

<https://www.phoenixcontact.com/us/products/1026924>

Media module

Media module - FL SFP FX SM - 2891082

<https://www.phoenixcontact.com/us/products/2891082>



The small form-factor plug-in module provides a fiber optic interface with a data transmission speed of 100 Mbps with a wavelength of 1310 nm (long).

Media module

Media module - FL SFP SX - 2891754

<https://www.phoenixcontact.com/us/products/2891754>



Gigabit SFP module for transmission up to 1 km with a wavelength of 850 nm.

Industrial Ethernet Switch - FL SWITCH 4000T-4POE-SFP



1026924

<https://www.phoenixcontact.com/us/products/1026924>

Media module

Media module - FL SFP SX2 - 2702397

<https://www.phoenixcontact.com/us/products/2702397>



Gigabit SFP module for transmission up to 2 km with a wavelength of 1310 nm.

Media module

Media module - FL SFP LX10-B - 1025401

<https://www.phoenixcontact.com/us/products/1025401>



Gigabit SFP module for transmission up to 10 km with a wavelength of 1310 nm.

Industrial Ethernet Switch - FL SWITCH 4000T-4POE-SFP



1026924

<https://www.phoenixcontact.com/us/products/1026924>

Media module

Media module - FL SFP LX - 2891767

<https://www.phoenixcontact.com/us/products/2891767>



Gigabit SFP module for transmission up to 30 km with a wavelength of 1310 nm.

Media module

Media module - FL SFP LH - 2989912

<https://www.phoenixcontact.com/us/products/2989912>



Gigabit SFP module for transmission up to 80 km with a wavelength of 1,550 nm.

Industrial Ethernet Switch - FL SWITCH 4000T-4POE-SFP



1026924

<https://www.phoenixcontact.com/us/products/1026924>

Media module

Media module - FL SFP WDM10-SET - 2702442

<https://www.phoenixcontact.com/us/products/2702442>



Gigabit SFP WDM set for transmission up to a maximum of 10 km on a single fiber with a wavelength of 1310/1550 nm.

Media module

Media module - FL SFP FE WDM20-SET - 2702439

<https://www.phoenixcontact.com/us/products/2702439>



Fast Ethernet SFP WDM set for transmission up to a maximum of 20 km on a single fiber with a wavelength of 1310/1550 nm.

Industrial Ethernet Switch - FL SWITCH 4000T-4POE-SFP



1026924

<https://www.phoenixcontact.com/us/products/1026924>

Media module

Media module - FL SFP GT - 2989420

<https://www.phoenixcontact.com/us/products/2989420>



Gigabit SFP module for transmission up to 100 m.

Patch cable

Patch cable - FL CAT5 PATCH 0,5 - 2832263

<https://www.phoenixcontact.com/us/products/2832263>



Patch cable, CAT5, assembled, 0.5 m

Industrial Ethernet Switch - FL SWITCH 4000T-4POE-SFP



1026924

<https://www.phoenixcontact.com/us/products/1026924>

Patch cable

Patch cable - FL CAT5 PATCH 1,0 - 2832276

<https://www.phoenixcontact.com/us/products/2832276>

Patch cable, CAT5, assembled, 1 m



Patch cable

Patch cable - FL CAT5 PATCH 2,0 - 2832289

<https://www.phoenixcontact.com/us/products/2832289>

Patch cable, CAT5, assembled, 2 m



Industrial Ethernet Switch - FL SWITCH 4000T-4POE-SFP



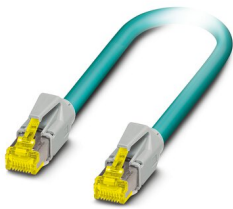
1026924

<https://www.phoenixcontact.com/us/products/1026924>

Patch cable

Patch cable - NBC-R4AC-R4AC-IE8A/.../... - 1411854

<https://www.phoenixcontact.com/us/products/1411854>

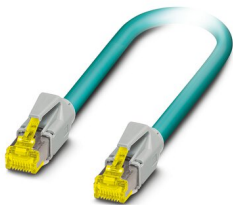


Patch cable, degree of protection: IP20, number of positions: 8, 10 Gbps, CAT6_A, cable outlet: straight, Ethernet

Patch cable

Patch cable - NBC-R4AC/10G-R4AC/10G-94F/2,0 - 1408360

<https://www.phoenixcontact.com/us/products/1408360>



Patch cable, CAT6_A, 4-pair, shielded, connection not crossed (line), assembled at both ends with RJ45/IP20 connectors, outer sheath material: PUR, length: 2.0 m

Industrial Ethernet Switch - FL SWITCH 4000T-4POE-SFP



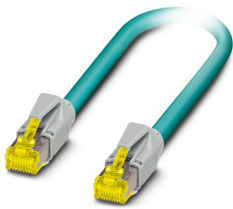
1026924

<https://www.phoenixcontact.com/us/products/1026924>

Patch cable

Patch cable - NBC-R4AC/10G-R4AC/10G-94F/3,0 - 1408365

<https://www.phoenixcontact.com/us/products/1408365>



Patch cable, CAT6_A, 4-pair, shielded, connection not crossed (line), assembled at both ends with RJ45/IP20 connectors, outer sheath material: PUR, length: 3.0 m

Patch cable

Patch cable - NBC-R4AC/1,0-93B/R4AC - 1408968

<https://www.phoenixcontact.com/us/products/1408968>



Patch cable, degree of protection: IP20, cable length: 1 m, number of positions: 4, 100 Mbps, CAT5, material: PA 6.6, PROFINET

Industrial Ethernet Switch - FL SWITCH 4000T-4POE-SFP

1026924

<https://www.phoenixcontact.com/us/products/1026924>

Patch cable

Patch cable - NBC-R4AC/2,0-93B/R4AC - 1408969

<https://www.phoenixcontact.com/us/products/1408969>



Patch cable, degree of protection: IP20, cable length: 2 m, number of positions: 4, 100 Mbps, CAT5, material: PA 6.6, PROFINET

Patch cable

Patch cable - NBC-R4AC/5,0-93B/R4AC - 1408970

<https://www.phoenixcontact.com/us/products/1408970>



Patch cable, degree of protection: IP20, cable length: 5 m, number of positions: 4, 100 Mbps, CAT5, material: PA 6.6, PROFINET

Industrial Ethernet Switch - FL SWITCH 4000T-4POE-SFP



1026924

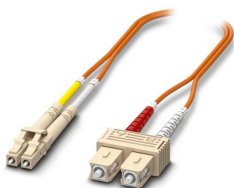
<https://www.phoenixcontact.com/us/products/1026924>

FO patch cable

FO patch cable - FOC-LC:PA-SC:PA-OM2:D01/1 - 1115607

<https://www.phoenixcontact.com/us/products/1115607>

Multi-mode OM2 duplex jumper, LC-SC, UPC polishing, length 1 m

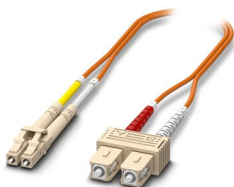


FO patch cable

FO patch cable - FOC-LC:PA-SC:PA-OM2:D01/2 - 1115605

<https://www.phoenixcontact.com/us/products/1115605>

Multi-mode OM2 duplex jumper, LC-SC, UPC polishing, length 2 m



Industrial Ethernet Switch - FL SWITCH 4000T-4POE-SFP



1026924

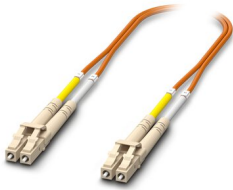
<https://www.phoenixcontact.com/us/products/1026924>

FO patch cable

FO patch cable - FOC-LC:PA-LC:PA-OM2:D01/1 - 1115633

<https://www.phoenixcontact.com/us/products/1115633>

Multi-mode OM2 duplex jumper, LC-LC, UPC polishing, length 1 m

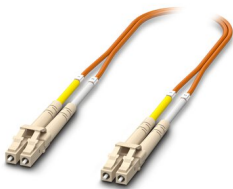


FO patch cable

FO patch cable - FOC-LC:PA-LC:PA-OM2:D01/2 - 1115634

<https://www.phoenixcontact.com/us/products/1115634>

Multi-mode OM2 duplex jumper, LC-LC, UPC polishing, length 2 m



Industrial Ethernet Switch - FL SWITCH 4000T-4POE-SFP



1026924

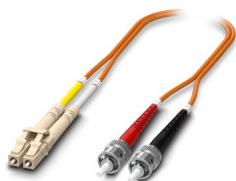
<https://www.phoenixcontact.com/us/products/1026924>

Fiber optic cable

Fiber optic cable - FOC-LC:PA-ST:PA-OM2:D01/1 - 1115588

<https://www.phoenixcontact.com/us/products/1115588>

Multi-mode OM2 duplex jumper, LC-ST, UPC polishing, length 1 m

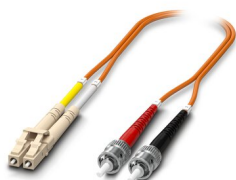


Fiber optic cable

Fiber optic cable - FOC-LC:PA-ST:PA-OM2:D01/2 - 1115587

<https://www.phoenixcontact.com/us/products/1115587>

Multi-mode OM2 duplex jumper, LC-ST, UPC polishing, length 2 m



Industrial Ethernet Switch - FL SWITCH 4000T-4POE-SFP

1026924

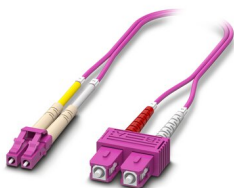
<https://www.phoenixcontact.com/us/products/1026924>

FO patch cable

FO patch cable - FOC-LC:PA-SC:PA-OM4:D01/1 - 1115601

<https://www.phoenixcontact.com/us/products/1115601>

Multi-mode OM4 duplex jumper, LC-SC, UPC polishing, length 1 m

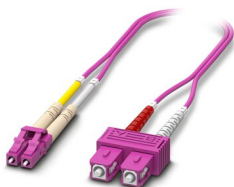


FO patch cable

FO patch cable - FOC-LC:PA-SC:PA-OM4:D01/2 - 1115600

<https://www.phoenixcontact.com/us/products/1115600>

Multi-mode OM4 duplex jumper, LC-SC, UPC polishing, length 2 m



Industrial Ethernet Switch - FL SWITCH 4000T-4POE-SFP

1026924

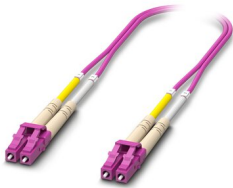
<https://www.phoenixcontact.com/us/products/1026924>

FO patch cable

FO patch cable - FOC-LC:PA-LC:PA-OM4:D01/1 - 1115625

<https://www.phoenixcontact.com/us/products/1115625>

Multi-mode OM4 duplex jumper, LC-LC, UPC polishing, length 1 m

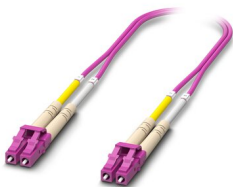


FO patch cable

FO patch cable - FOC-LC:PA-LC:PA-OM4:D01/2 - 1115624

<https://www.phoenixcontact.com/us/products/1115624>

Multi-mode OM4 duplex jumper, LC-LC, UPC polishing, length 2 m



Industrial Ethernet Switch - FL SWITCH 4000T-4POE-SFP



1026924

<https://www.phoenixcontact.com/us/products/1026924>

FO patch cable

FO patch cable - FOC-LC:PA-LC:PA-OS2:D01/1 - 1115636

<https://www.phoenixcontact.com/us/products/1115636>

Single-mode OS2 duplex jumper, LC-LC, UPC polishing, length 1 m



FO patch cable

FO patch cable - FOC-LC:PA-LC:PA-OS2:D01/2 - 1115629

<https://www.phoenixcontact.com/us/products/1115629>

Single-mode OS2 duplex jumper, LC-LC, UPC polishing, length 2 m



Industrial Ethernet Switch - FL SWITCH 4000T-4POE-SFP



1026924

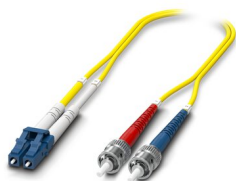
<https://www.phoenixcontact.com/us/products/1026924>

FO patch cable

FO patch cable - FOC-LC:PA-ST:PA-OS2:D01/1 - 1115596

<https://www.phoenixcontact.com/us/products/1115596>

Single-mode OS2 duplex jumper, LC-ST, UPC polishing, length 1 m

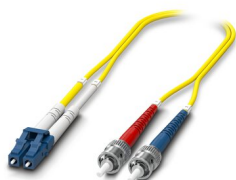


FO patch cable

FO patch cable - FOC-LC:PA-ST:PA-OS2:D01/2 - 1115595

<https://www.phoenixcontact.com/us/products/1115595>

Single-mode OS2 duplex jumper, LC-ST, UPC polishing, length 2 m



Industrial Ethernet Switch - FL SWITCH 4000T-4POE-SFP



1026924

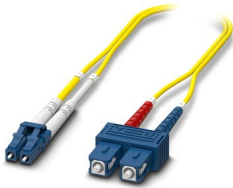
<https://www.phoenixcontact.com/us/products/1026924>

FO patch cable

FO patch cable - FOC-LC:PA-SC:PA-OS2:D01/1 - 1115618

<https://www.phoenixcontact.com/us/products/1115618>

Single-mode OS2 duplex jumper, LC-SC, UPC polishing, length 1 m

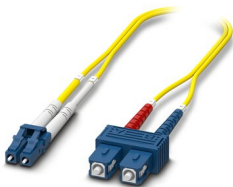


FO patch cable

FO patch cable - FOC-LC:PA-SC:PA-OS2:D01/2 - 1115617

<https://www.phoenixcontact.com/us/products/1115617>

Single-mode OS2 duplex jumper, LC-SC, UPC polishing, length 2 m



Phoenix Contact 2022 © - all rights reserved
<https://www.phoenixcontact.com>

Phoenix Contact USA
586 Fulling Mill Road
Middletown, PA 17057, United States
(+717) 944-1300
info@phoenixcon.com